

# Who Lives Where?

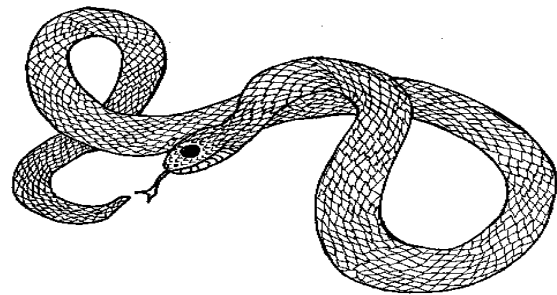
Would you be able to find a monkey in Antarctica or a penguin in the tropical rainforest? The world is made up of many different environments: hot, cold, wet, dry, windy, rainy, sandy, snowy, tree-covered, mountainous...you can probably think of more! The environment an animal lives in affects its overall lifestyle—such as what it eats, how it moves, and where it sleeps.

Our animals at the zoo represent species that can be found all over the world in all these different environments. To keep them happy and healthy, we try to make sure their **zoo habitat** is similar to their **wild habitat** in the most important ways. You will be visiting some animals around the zoo and **observing** them in their habitats.

For each animal you observe, read the short paragraph below. Your job is to compare the animal's zoo home with this description of where and how it lives in the wild. **Describe three ways that its zoo habitat is designed to provide a similar environment.** Make sure you spend some time observing the animal in its habitat. How does it use the natural and man-made objects found there? If it is not using something, how do you think it could be used? There may be more than a few right answers. It's okay to make guesses!

## Reticulated Python

The longest snake in the world (up to 30 feet!) lives in southeast Asia and the Pacific Islands, near streams and lakes in tropical rainforests. Snakes cannot regulate their own body temperature as mammals can. This is why they live in dense jungles that provide warmth as well as cool shelters like mammal burrows, tree holes, and hollow logs. Pythons are strong tree-climbers and swimmers. They are very dependent on water and are often be found near small rivers or ponds.



1. \_\_\_\_\_  
\_\_\_\_\_
2. \_\_\_\_\_  
\_\_\_\_\_
3. \_\_\_\_\_  
\_\_\_\_\_

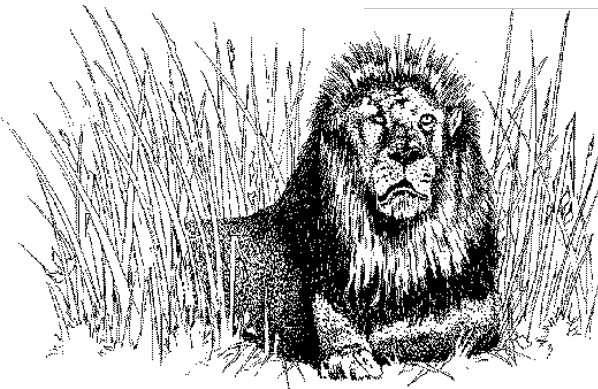
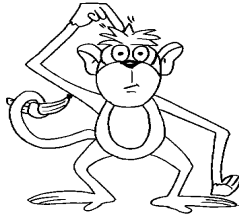
## Red-Capped Mangabey

These lively monkeys are found in central West Africa, in dense forests near rivers. They are extremely playful and alert. They leap from tree to tree, swing on hanging vines, and play with sticks and leaves. They often descend to the forest floor or to the river's edge to feed on young leaves and shoots.

1. \_\_\_\_\_

2. \_\_\_\_\_

3. \_\_\_\_\_



## African Lion

The “King of the Jungle” doesn’t actually live there—it’s too hard to hunt prey. Lions live south of the Sahara Desert in grasslands, savannahs, and open woodlands. They rest for 20 hours a day, usually somewhere with cover from the hot sun. They enjoy climbing, and lying on large rocks. They require a covered lair for birthing young and drink regularly when water is available.

1. \_\_\_\_\_

2. \_\_\_\_\_

3. \_\_\_\_\_

## North American River Otter

Fun-loving river otters can be found in many freshwater habitats, but they prefer lakes, ponds, and wooded rivers and streams. They also come up on the banks of their watery homes. Otters are very playful. They enjoy running, wrestling, and swimming under fallen branches. They slide down wet grassy slopes into the water repeatedly just for fun, and also slide on the ice in wintertime. They like to sleep in a some sort of covered shelter, such as beneath rocky ledges or fallen trees and inside log jams or drift piles.



1. \_\_\_\_\_

---

---

2. \_\_\_\_\_

---

---

3. \_\_\_\_\_

---

---



## Great Hornbill

Hornbills are hole-nesters. When nesting time comes around, a pair of hornbills will look for the perfect hollow tree in their home in the tropical rainforests of India and Southeast Asia. The female squeezes in and she and the male use mud and other materials to almost completely block up the hole, so she feels safe. The male feeds her through a tiny hole. After the babies are hatched and the female breaks out, the babies immediately seal up the hole again! Hornbills are territorial; they stay in a small area and eat fruit from the trees.

1. \_\_\_\_\_

---

---

2. \_\_\_\_\_

---

---

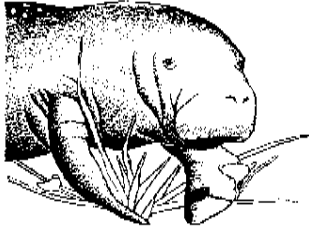
3. \_\_\_\_\_

---

---

## West Indian Manatee

Lastly, here's an animal we **don't** have. How would we design a zoo habitat for it? List three necessary features of a zoo habitat for this animal.



Manatees are slow-moving marine mammals that can weigh up to 1000 pounds and be 10 feet long! They can live in salt or fresh water, although they highly enjoy drinking fresh water. They eat a tremendous amount of aquatic plants: 10-15% of their body weight *every day*. Because they graze along the bottom and must come up to breathe every 3-5 minutes, they remain in shallow areas in the wild.

1. \_\_\_\_\_  
\_\_\_\_\_
2. \_\_\_\_\_  
\_\_\_\_\_
3. \_\_\_\_\_  
\_\_\_\_\_

Now let's try it the opposite way! Take a look at three important features of the zoo habitat and write a short paragraph about what the sea lion's wild habitat looks like, and what they might do there.

## California Sea Lion

1. Water in the sea lion tank is very cold and salty.
2. The tank is big enough for the sea lions to get plenty of swimming exercise.
3. There is a pebbly ramp that comes down to the water so the sea lions can come out when they choose to.



---

---

---

---

---

---

---

---

---

---